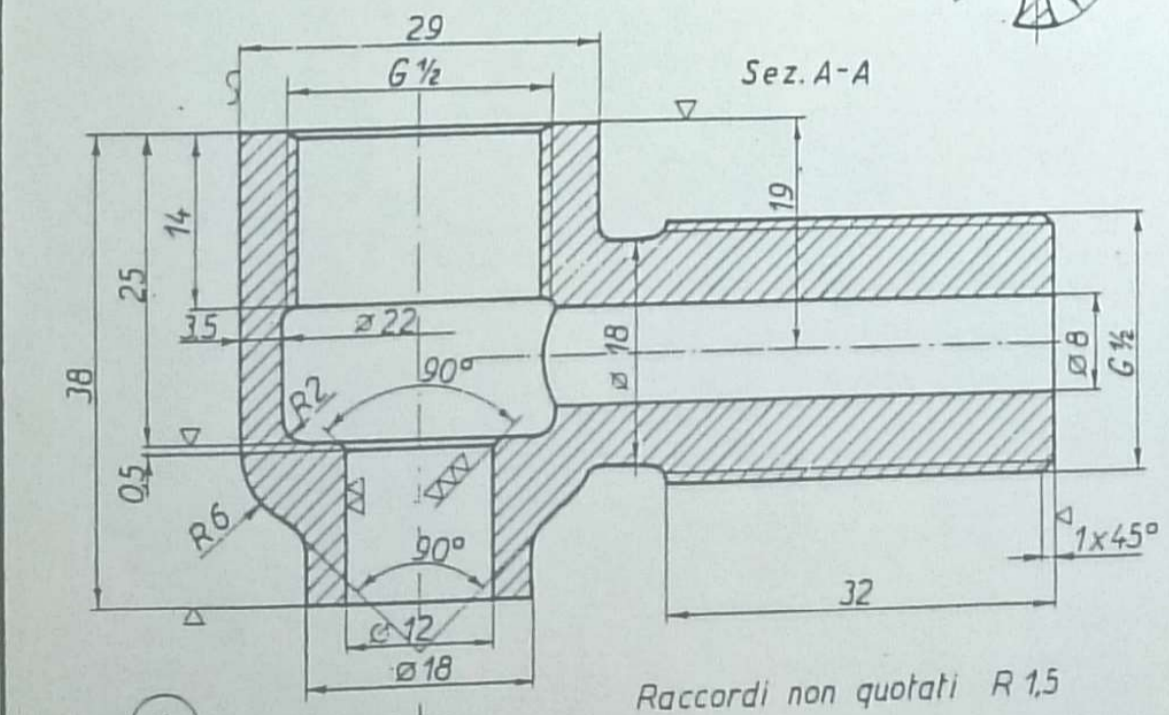
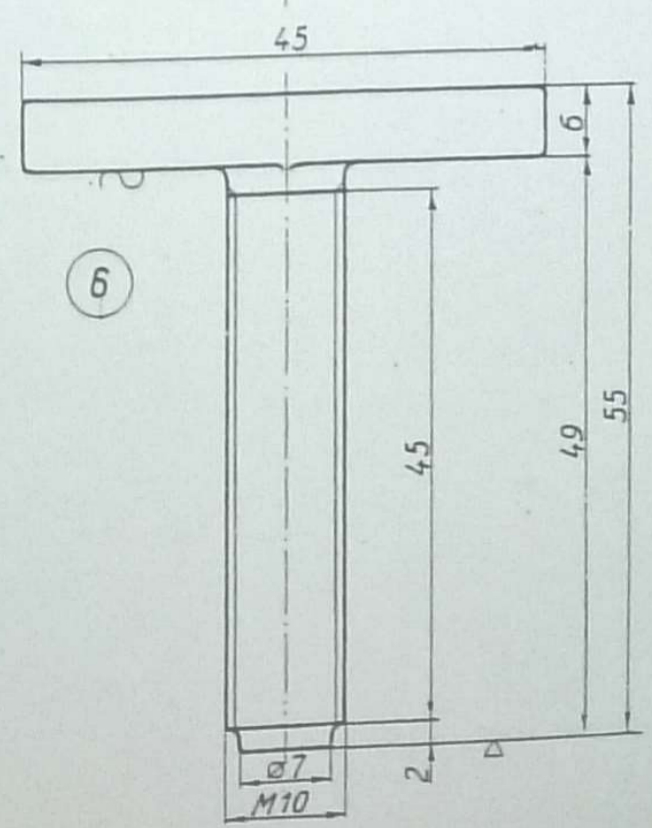
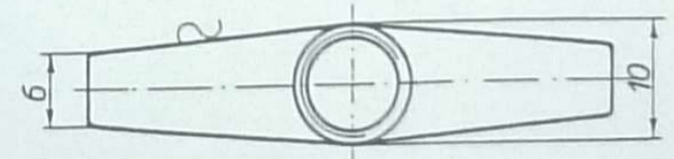
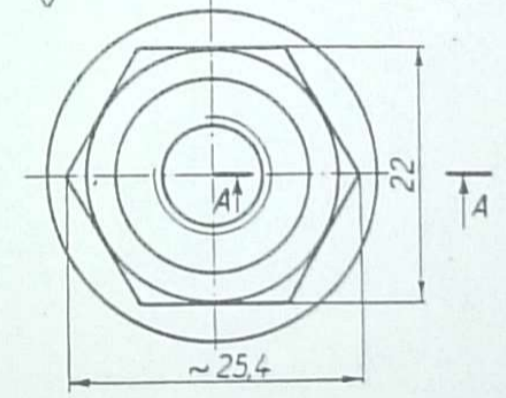
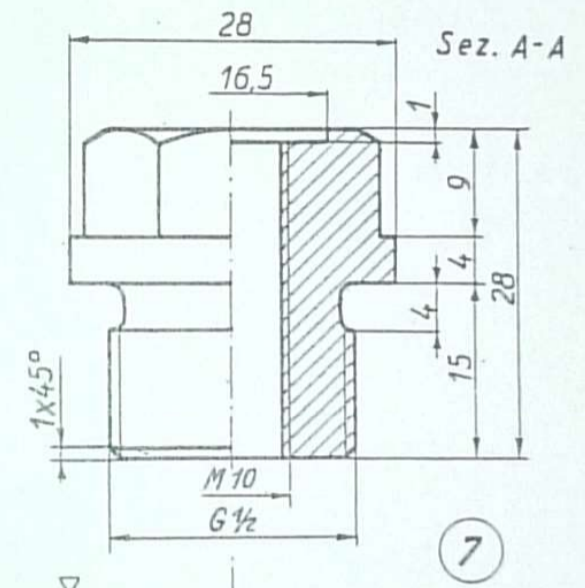
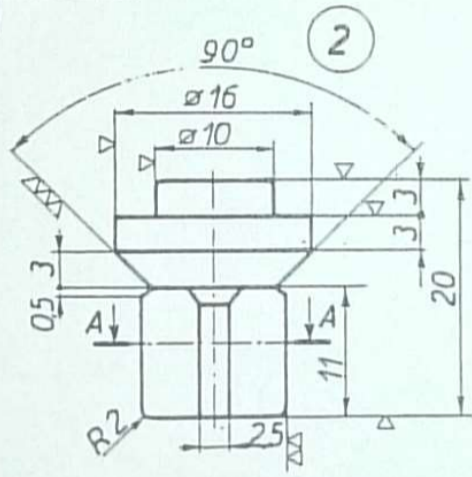
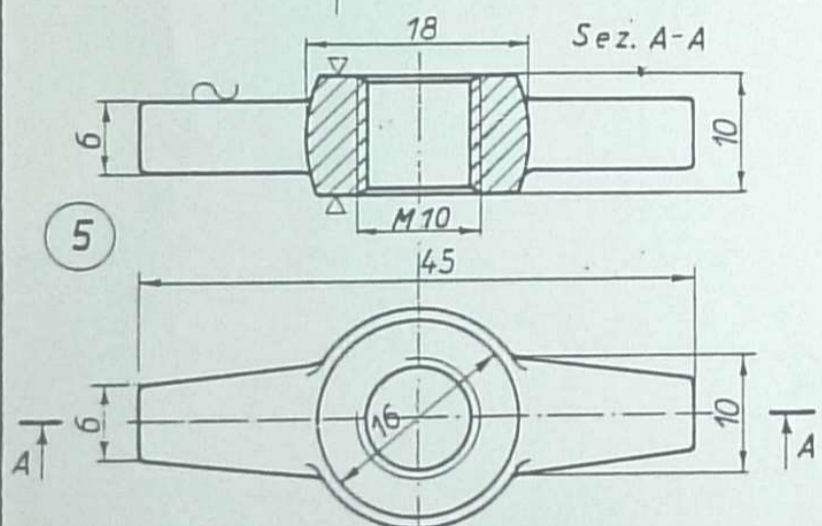
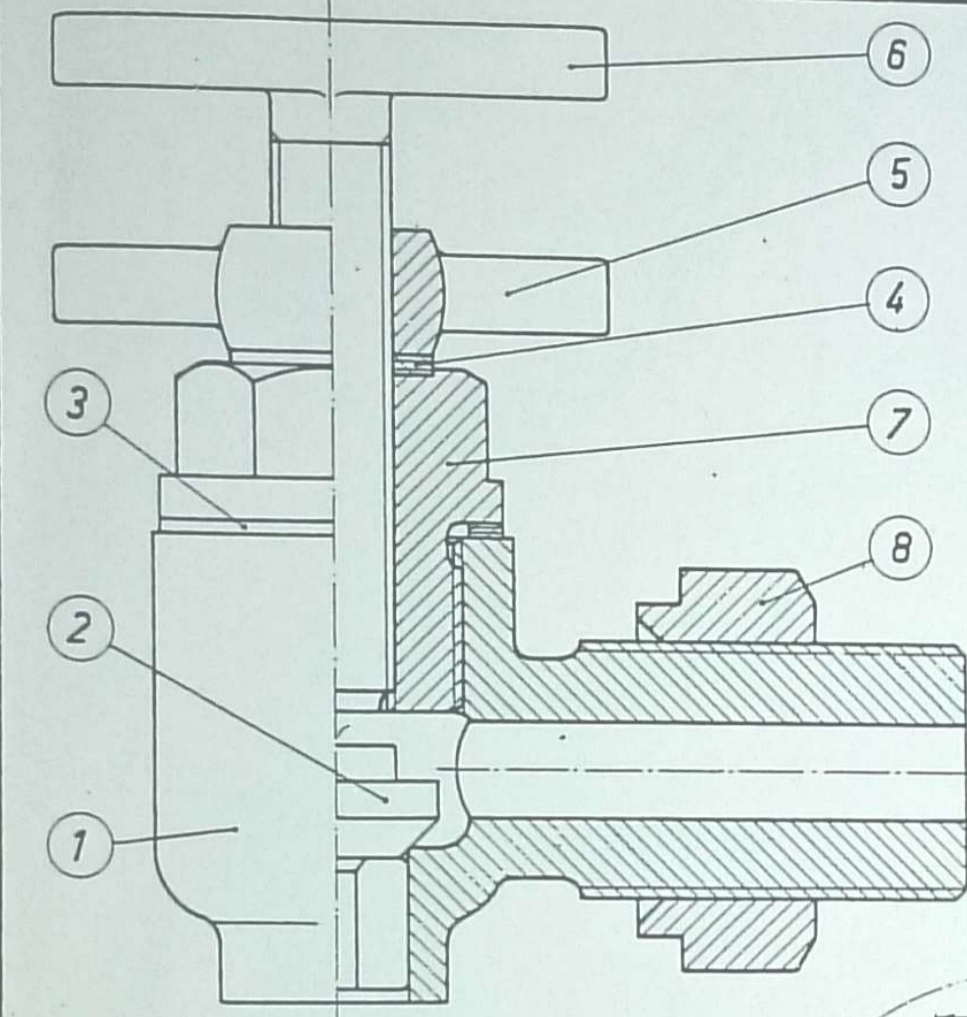


8	Dado	P-Cu Zn 40 Pb 2 UNI 5705-65	
7	Coperchio	P-Cu Zn 40 Pb 2 UNI 5705-65	
6	Stelo con impugnatura	OT 558 UNI 2012	
5	Maniglia	P-Cu Zn 40 Pb 2 UNI 5705-65	
4	Guarnizione	Gomma con inser- zione tessile	
3	Anello di guarnizione	Rame ricotto	
2	Otturatore	OT 558 UNI 2012	
1	Cassa	BZN 7 UNI 1701	
Pos.	Denominazione	Materiale	Note
Data	Valvola atmosferica per pompa	Scala Dis. N°	



Raccordi non quotati R 1,5

